

ALONE IN THE DARK



Interplay



3DO

3DO, the 3DO logo and Interactive Multiplayers are trademarks of The 3DO Company.

Alone in the Dark™

Table of Contents

Getting Started2

The Character3

Character Actions5

Using Items6

Combat7

Saving, Loading and Options8

Miscellaneous Tips9

Credits10

THE 3DO COMPANY SHALL NOT BE LIABLE TO THE END USER FOR ANY LOSS OF DATA, LOST PROFITS, COST OF SUBSTITUTE GOODS OR OTHER CONSEQUENTIAL, INCIDENTAL, SPECIAL, PUNITIVE, OR OTHER DAMAGES OF ANY KIND ARISING OUT OF THE USE OF OR INABILITY TO USE THE SOFTWARE.

THE 3DO COMPANY MAKES NO WARRANTIES, EXPRESSED, IMPLIED OR STATUTORY, REGARDING THE SOFTWARE, INCLUDING WITHOUT LIMITATION THE IMPLIED WARRANTIES OF MERCHANTABILITY AND FITNESS FOR ANY PARTICULAR PURPOSE, OR ANY EQUIVALENT WARRANTIES UNDER THE LAWS OF ANY JURISDICTION.

DO NOT USE A FRONT OR REAR PROJECTION TELEVISION WITH THIS PRODUCT. YOUR PROJECTION TELEVISION SCREEN MAY BE PERMANENTLY DAMAGED IF STATIONARY SCENES OR PATTERNS ARE PLAYED ON YOUR PROJECTION TELEVISION. SIMILAR DAMAGE MAY OCCUR IF YOU PLACE THIS PRODUCT ON HOLD OR PAUSE. IF YOU USE YOUR PROJECTION TELEVISION WITH THIS PRODUCT, NEITHER THE 3DO COMPANY NOR INTERPLAY WILL BE LIABLE FOR ANY RESULTING DAMAGE. THIS SITUATION IS NOT CAUSED BY A DEFECT IN THIS PRODUCT OR THE 3DO SYSTEM; OTHER FIXED OR REPETITIVE IMAGES MAY CAUSE SIMILAR DAMAGE TO A PROJECTION TELEVISION. PLEASE CONTACT YOUR TV MANUFACTURER FOR FURTHER INFORMATION.

THE EXECUTION OF SOFTWARE WITH THE 3DO SYSTEM INVOLVES THE USE OF PATENT RIGHTS, GRANTED OR APPLIED FOR, IN CERTAIN COUNTRIES. A PURCHASER OF THE 3DO SYSTEM IS LICENSED TO USE SUCH PATENT RIGHTS WITH SOFTWARE LICENSED BY THE 3DO COMPANY. NO LICENSE, IMPLIED OR OTHERWISE, IS GRANTED FOR THE EXECUTION OF OTHER SOFTWARE.

Alone in the Dark™

GETTING STARTED

Turn on the 3DO system and insert the *Alone in the Dark* CD. After the 3DO logo vanishes, several credit and logo screens will appear. You may press the A, B or C button to advance immediately to the Title screen. Pressing A, B or C again will advance you to the Start/Continue Game screen.

INTRODUCTION

The owner of Derceto, Jeremy Hartwood, died a few days ago. The police report, filed after a cursory investigation, concluded that the well-known artist had taken his own life. His devoted butler confirmed that Hartwood had been suffering from considerable mental depression for some months. He had placed even more strain on his already delicate health by translating the many ancient manuscripts contained in Derceto's extensive library. He also suffered from insomnia and what few hours of sleep he had were troubled by particularly disturbing nightmares. He appeared to be convinced of a mysterious presence in the old house.

Derceto is now empty. Rumors abound of a curse or of an evil power dwelling within its walls. Such stories are not uncommon with houses like Derceto, especially in this particular area. For some days now, however, a cloud of doubt has hung over your mind...

What are those strange lights inside the house at nightfall? What could account for the eerie noises to be heard each time you approach? Why did Jeremy commit suicide? And what compels you towards the house? What is Derceto's terrible secret?

THE CHARACTER

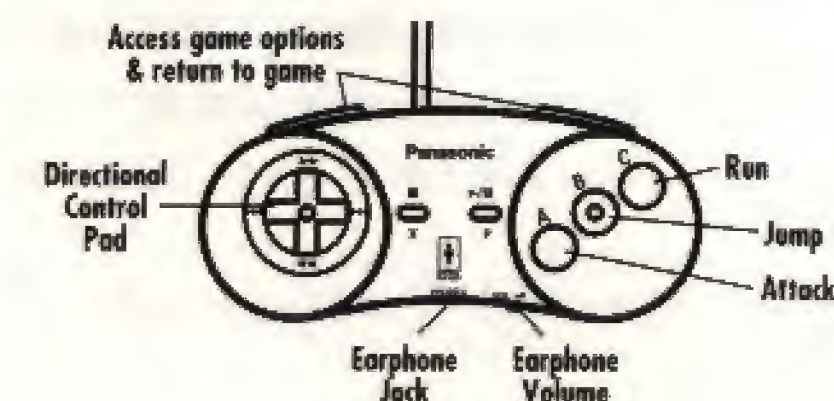
SELECTION

After starting the game you will be presented with two characters. Emily HARTWOOD is highlighted as the default selection. Press the right arrow on the directional pad to choose Edward CARNBY. Press the "A" button to confirm your choice. A short character prologue will then follow.



MOVING

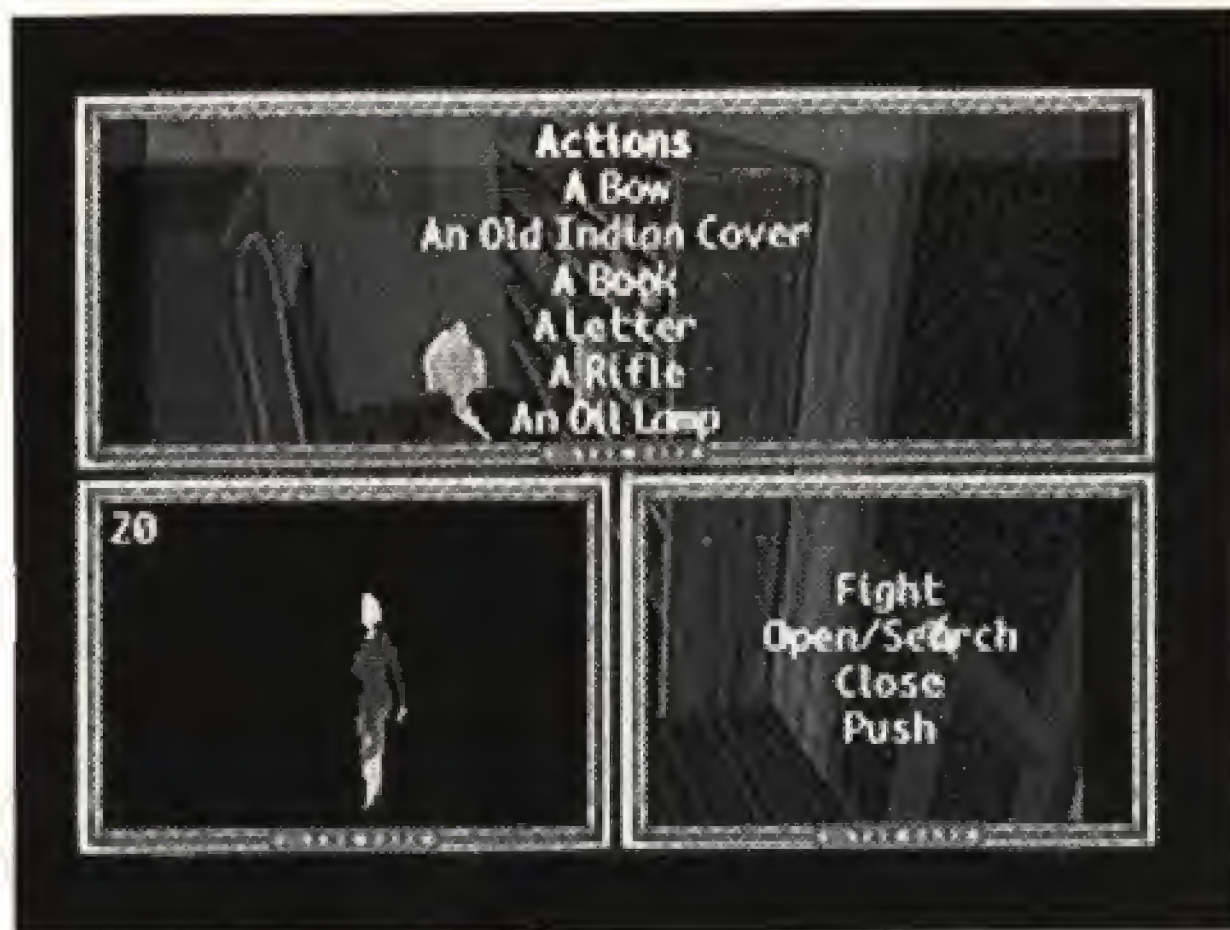
The character can be moved in any direction using the directional pad. The movements are exclusively controlled by the directional pad. You can make the character run: when the character is walking, release the directional pad and quickly press it again in the direction of travel, or simply press the "C" Button.





THE OPTIONS SCREEN

To carry out certain specific actions and use any objects you have found during play, you must switch to the Options screen. Press the "B" button. The following screen will then be displayed:

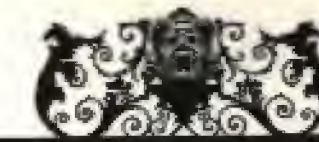


- 1) Window 1, at the top of the screen, contains the items you have found.
- 2) Window 2, at the bottom left of the screen, shows either your character with Life Points, or a selected item and any available reloads or cartridges.
- 3) The bottom right window, number 3, offers a choice of actions available for the character or shows what can be done with the selected item.

The items in your possession or available actions are displayed in green. Your selection appears in white.

If you wish to carry out a specific action or use an item, select the "Actions" option or the item in your possession, using the directional pad. Then press the "A" button to confirm. You will then switch to window 3. Use the directional pad to scroll up and down to choose an action or function. To confirm your choice, press the "A" button. You will return to the game.

To return to window 1 when the cursor is in window 3, press Left or Right on the directional pad.



CHARACTER ACTIONS

ACTIONS

You can perform certain actions whenever you wish: Fight, Open/Search, Shut, Push and Jump (at certain times only). Other actions are directly linked to items in your possession (see "Using Items").

Fight — Press the "A" button and keep it pressed: your character is ready to attack. By pressing Left or Right on the directional pad, your character will throw a punch with either his left or right fist. Press up on the directional pad to kick.

Remember to keep both the "A" button and the relevant arrow pressed on the directional pad as you punch or kick.

Open/Search — Place the character near the item you wish to open or search. Press the "A" button, the character will then either search or attempt to open the item. Keep the "A" button pressed down long enough for your character to do the job!

Shut — Your character will shut a door or trap door if you keep the "A" button depressed for a few moments. It is important to face the actual door and not the opening when closing doors.

Push — To move a large object or a piece of furniture, keep the "A" button pressed and use the appropriate arrow on the directional pad.

Jump — During certain phases of the game, this option will be displayed in the list of available actions.

There are three different jumps:

Hop: Press the "A" button quickly, when your character is standing still.

Jump: Press the "A" button while your character is walking.

Leap: Press the "A" button while your character is running.

When you have selected one of these actions in the Options screen, you will be returned to the game and can then carry out the chosen action.

USING ITEMS

TAKING AN ITEM

There are two ways to take an item. If it is visible and your character is beside it, then a window will be displayed, asking whether or not you wish to take the item. If, on the other hand, the item is invisible, then you will need to use the Open/Search option.



USING AN ITEM IN YOUR POSSESSION

To use such an item, select it from the list (see the chapter concerning the Options screen). Then select the desired function (Reload, Eat, Drop, Throw,...) and confirm in window 3.

When you return to the game, a message will confirm the requested action.

COMBAT

Your character can fight with both hands and feet or use a weapon.

HAND-TO-HAND FIGHTING

Select the Fight option in the "Actions" command.

Keep the "A" button pressed down and use one of the following directions on the directional pad:

- **Left:** Punch with the left hand.
- **Right:** Punch with the right hand.
- **Up or Down:** Kick.

Keep both the "A" button and the directional pad pressed long enough for the blow to be delivered correctly.

FIGHTING WITH A CUTTING OR THRUSTING WEAPON

Choose the weapon your character will fight with, then select the "Use" option.

Keep the "A" button pressed down and use one of the following directions on the directional pad:

- **Left:** Swing from left to right.
- **Right:** Swing from right to left.
- **Up:** Overhead Swing.
- **Down:** Backs up.

FIGHTING WITH FIREARMS

In the Option screen, choose the gun your character will fire, then select the "Use" option.

Keep the "A" button pressed down and use one of the following directions on the directional pad:

- **Left:** Direct the gun towards the left.
- **Right:** Direct the gun towards the right.
- **Up:** Fire.

SAVING, LOADING, AND OPTIONS

Press the left or right buttons to access the Options screen:

Use the directional pad to choose an option. The selected option will appear in white.

Return to Game — Press the A button to return to the game.

Save Game — Press the A button to save your game. Your game will be saved and you will be returned to play.



Load a Saved Game — Press the A button. You will then access a table of saved files. Use the ▲ and ▼ arrows on the directional pad to select a file, then press the A button to confirm your choice.

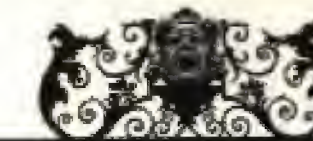


Music ON/OFF — Use this option to switch the music on or off.

Sound Effects ON/OFF — Use this option to switch the sound effects on or off.

Detail Level: Low/High — The 3DO version only operates at High details level.

Quit — To quit the game you are currently playing, press the A button. You will be returned to the main menu.



MISCELLANEOUS TIPS

- You can avoid fighting some of the monsters in the game. Read between the lines of all the available documents. Clues are hidden within them!
- It's a good idea to save your game before reading some books.
- If you are stuck upstairs and can't get by the medusae, the solution is: (The answer is spelled backwards) kaerb eht esav, teg eht yek, kcoln eht reward, dna tup eht srorrin ni hcae renroc fo eht gnidnal.
- If you are stuck underground in the maze and can't get out, the solution is: ta eht ES dne fo eht ezam si a enots rood, tup eht s'etarip meg ni eht eloh ni eht rood.
- If you are at the altar and don't know what to do, the solution is: ecalp eht namsilat no eht ratla ot pots eht sllaberif, neht thgil eht pmal dna worht ti ta eht retneq fo eht eert.

TROUBLESHOOTING GUIDE

Problem: The Program Doesn't Load Properly.

- Did you place the disk in the machine?
- Did you turn the power on?



CREDITS

3DO Producer:
Vince DeNardo

3DO Programming:
Krisalis Software Ltd.

Produced by:
Infogrames

Directed by:
Franck De Girolami

First assistant:
Vincent Terraillon

Production designer:
Patrick Charpenet

Screenplay:
Hubert Chardot, Frédéric Cornet, Christian Nabais

Scenario coding:
Christiane Sgorlon, Christophe Nazaret

Animations:
Frédérique Bourgin, Jean-Marie Nazaret

Settings:
Jean-Christophe Blanc, Christophe Anton

Music and sounds:
Frédéric Mentzen

Publishing:
Olivier Robin, Edith Protiere

Game Manual:
Larry Fukuoka

3DO Testing:
Scott McKelvey, Nina Levitin, Ryan Rucinski, Raphael Hernandez

Translations:
Beate Reiter-Vialle

Special thanks to:
Bruno Bonnell, Eric Mottet, Olivier Goulay, Norbert Cellier, Bill Heineman and Sasha

CUSTOMER SUPPORT

Hints are available at 1-900-370-PLAY. No hints will be given on our Customer Service lines. You must have a touch tone phone to use this service.

The Charge is \$1.25 for the first minute and \$.75 for each additional minute. Long distance charges are included in this cost. Callers under the age of 18 must get parental permission to call. Hints are also available by writing to Interplay.

If you have any questions about this, or any other Interplay product, you can reach our Customer Support/Technical Service Group at:

Interplay 17922 Fitch Avenue Irvine, CA 92714 Attn: Customer Support. Or call (714) 553-6678, Monday through Friday.

Please have your system information available, or better yet, try to be at your computer. The more detailed information you can provide our support personnel, the better service we can provide you.

If you have a modem, you can reach us at the following:

The Interplay BBS: We have a 24-hour, 7-day a week multiline BBS available for customer questions, support and fixes. The number is 714-252-2822. Modem settings are 300-14.4k Baud, V.32bis, V.42bis, 8-N-1. This is a free service.

America Online: You can E-mail Interplay Customer Support at INTERPLAY. To reach our Customer Support board in the Industry Connection, press CTRL-K for "Go To Keyword." Then type INTERPLAY in the Keyword window. In addition to reading and leaving messages, you can download fixes and demos from the "Software Libraries."

CompuServe: We are available for IBM and compatible on-line support. We are located in the Game Publishers B Forum, type GO GAMB PUB at any "!" prompt. Then select "Section 4" for Interplay Productions. You can leave technical support questions there. You can also download fixes and demos from Library 4 in GAMB PUB. The best place for game play hints about our games is in the GAMERS forum. If you are not already a CompuServe member, you can call CompuServe toll-free at 1-800-524-3388 and ask Representative #354 for a free introductory membership and a \$15 usage credit. For game play hints look in the Gamer's Forum (GO GAMERS). Besides technical support for Interplay products, CompuServe offers many other services, including communications, reference libraries, hardware and software support, travel, games and much more.

GEnie: We are located in the Games RoundTable by Scorpio, type M805;1 at any "?" prompt. Then select "Category 13" for Interplay Productions. Fixes and demos are available in the libraries.

PRODIGY® Interactive Personal Service: We are located in the Software Connexion. Use Jump to "Software Connexion". Select "The Publisher's Exchange". You can also send mail directly to us. Our ID is "PLAY998".

National Videotex Network: You can reach us by typing "GO GAMESFORUM" or you can send mail to our account "INTERPLAY". Demos and patches are available in the GAMESFORUM library. **NVN** features many online games, and other items of interest for gamers. For more information about **NVN**, call 800-336-9096.

Internet: You can reach Interplay with "interplay@aol.com" or "76702.1342@compuserve.com". Many Interplay demos and patches are available at Internet FTP sites.

LIMITED WARRANTY

INTERPLAY LIMITED 90-DAY WARRANTY

Interplay warrants to the original consumer purchaser of this computer software product that the recording medium on which the software programs are recorded will be free from defects in material and workmanship for 90 days from the date of purchase. If the recording medium is found defective within 90 days of original purchase, Interplay agrees to replace, free of charge, any product discovered to be defective within such period upon receipt at its Factory Service Center of the product, postage paid, with proof of date of purchase. This warranty is limited to the recording medium containing the software program originally provided by Interplay and is not applicable to normal wear and tear. This warranty shall not be applicable and shall be void if the defect has arisen through abuse, mistreatment, or neglect. Any implied warranties applicable to this product are limited to the 90-day period described above. Interplay disclaims all responsibility for incidental or consequential damages.

Some states do not allow limitations as to how long an implied warranty lasts and/or exclusions or limitations of incidental or consequential damages so the above limitations and/or exclusions of liability may not apply to you. This warranty gives you specific rights, and you may also have other rights which vary from state to state.

Lifetime Warranty

If the recording medium should fail after the original 90-day warranty period has expired, you may return the software program to Interplay at the address noted below with a check or money order for \$5.00 (U.S. currency), which includes postage and handling, and Interplay will mail a replacement to you. To receive a replacement, you should enclose the defective medium (including the original product label) in protective packaging accompanied by: (1) a \$5.00 check, (2) a brief statement describing the defect, and (3) your return address. If you have a problem with your software, you may wish to call us first at (714) 553-6678. If your media is defective and a replacement is necessary, U.P.S. or registered mail is recommended for returns. Please send the defective disk(s) only (not the box) with a description of the problem and \$5.00 to:

WARRANTY REPLACEMENTS

Interplay 17922 Fitch Ave., Irvine, CA 92714

System Upgrades

Interplay has a system upgrade policy. At any time after purchasing any Interplay product, you may send us your original CD and a check for \$25.00 (U.S. funds) and we will replace your CD with the version for another computer system that you specify. (This price is subject to change.)

Copying Prohibited

This software product is copyrighted 1992 by Infogrames and copyrighted 1994 by Interplay Productions. All rights are reserved. This manual is copyrighted 1994 by Interplay. *Alone in the Dark* is protected by the copyright laws that pertain to computer software. *Alone in the Dark* is a trademark of Infogrames. 3DO, the 3DO logos and Interactive Multiplayer are trademarks of The 3DO Company. All rights reserved.

NOTICE: *Interplay reserves the right to make modifications or improvements to the product described in this manual at any time and without notice.*